



EDLE

Environmental Diplomatic Leader
Education Program
University of Tsukuba



筑波大学
University of Tsukuba

Our Educational Philosophy

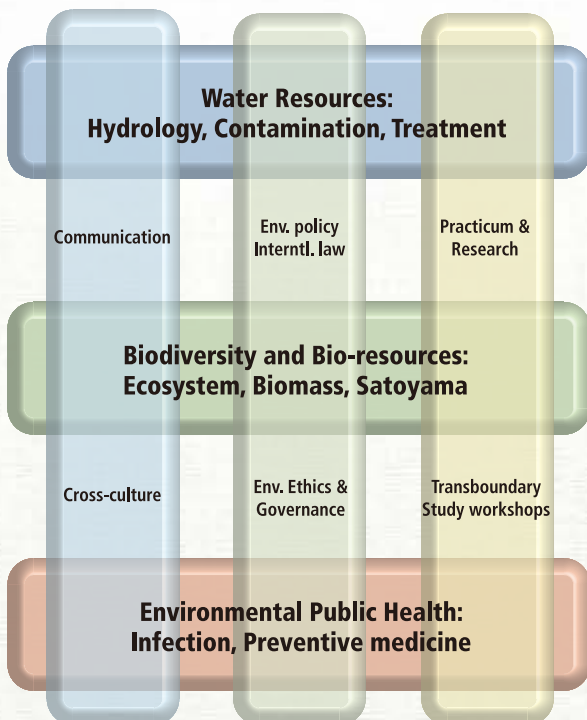
Global environmental problems are inextricably linked not only with natural science, but also with population growth, regional/ethnic conflicts, poverty, health/sanitation, and the deterioration of ecological systems. To solve these problems, one needs to be able to both recognize and understand culture, and its environmental, economic, political, and social backgrounds. Based on this understanding, the EDL program aims to achieve three objectives: (1) to foster theoretical knowledge and problem solving skills that are appropriate for domestic/international mediations; (2) to engage in environmental governance that encourages the active participation of various stakeholders; and (3) to advise those who have expertise in relevant areas, including the environment, environmental policies, ethics, legal systems, international relations, and comparative culture.

On obtaining this certificate, you will pride yourself as a “new environmental leader” and be ready to actively engage in international negotiations on the frontline!

A New interdisciplinary program to foster The Environmental Diplomatic Leader Program

The EDL program primarily focuses on Asia and Africa. It has three central fields: (1) water resources/water treatment/water policy; (2) biodiversity/bio-resources; and (3) public health.

Studying these fields is not simply acquiring knowledge of the relevant sciences and technologies. It also entails an enhancement of one’s skills in communication, administration, and diplomatic negotiation, skills pivotal in all three fields.



Bio-diversity / Bio-resources



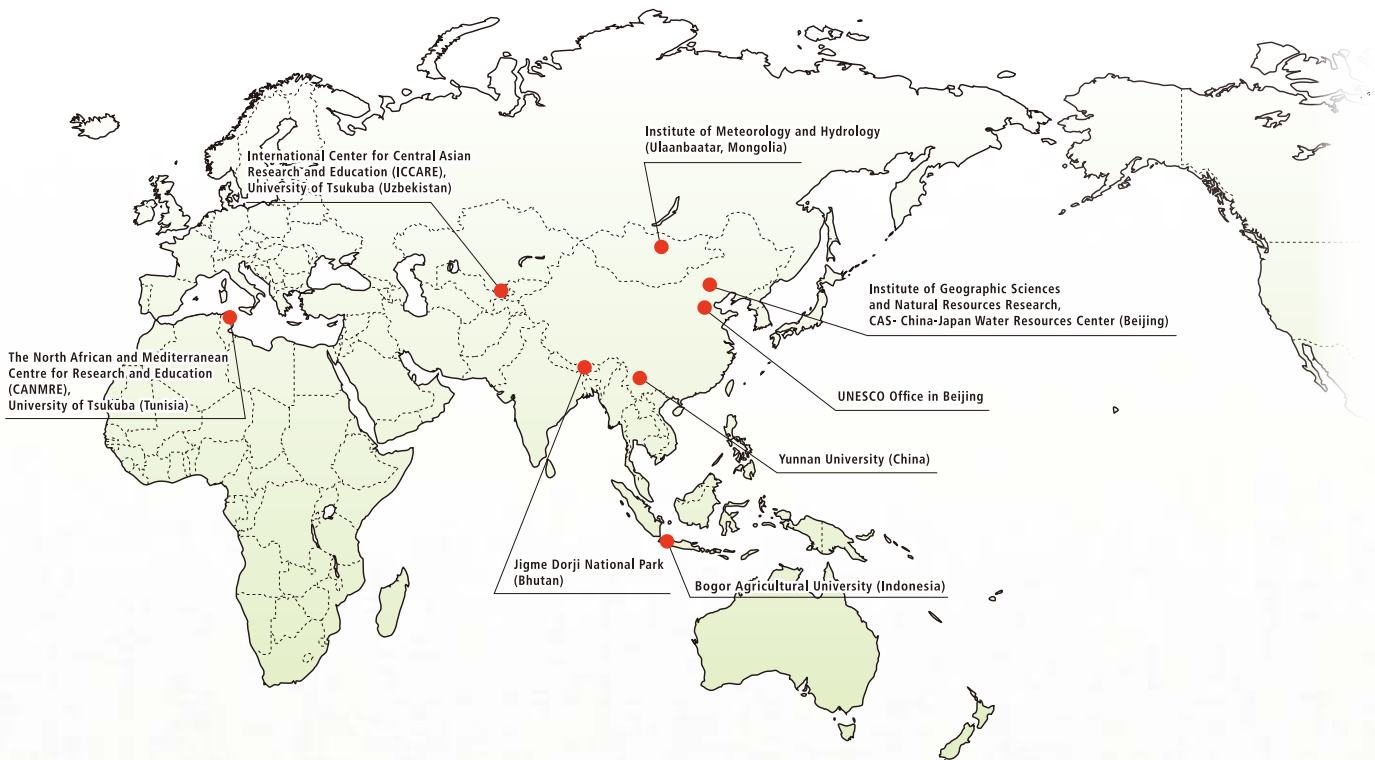
Water resources



Public health

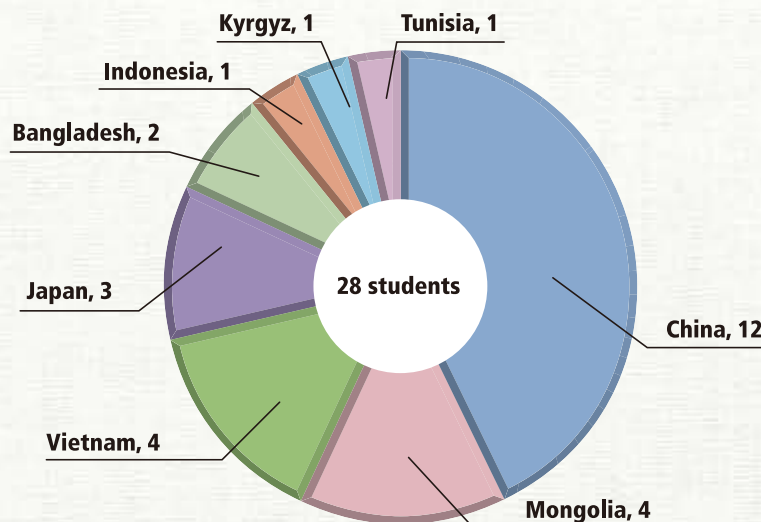
Program Structure

The EDL program is provided by faculty members from various research departments from the University of Tsukuba, its overseas institutions and affiliates, and from other research institutes in Tsukuba Science City. This collaboration establishes a new innovative educational/training program, including domestic/international internships and joint research projects, and aims to produce “environmental diplomatic leaders”.



EDL Students

This program has been offered to EDL candidates since April 2010 and the number of students is 28 (20 Master’s students and 8 Doctorate students) as of March, 2011. The first EDL students are from varied backgrounds, including Bangladeshi, Chinese, Indonesian, Japanese, Kyrgyz, Mongolian, Tunisian and Vietnamese nationals. It is expected that from these early relationships, international networks will be established in the years to come.



EDL curriculum

The EDL program is administered by the steering committee, which is formed under the president of the University of Tsukuba and made up of members from graduate schools of Life and Environmental Sciences, Comprehensive Human Sciences and Humanities, and Social Sciences. The curriculum is organized and well balanced to promote technical knowledge on environmental issues, negotiation skills via collaboration by teaching/research staff from various institutions in Tsukuba Science City. Whilst in the EDL program, students can participate in the entire process to graduation, in English.

Curriculum of Master's Program (Environmental Sciences) (2 years) Number of acceptance: 10 students per one grade

Master's Thesis: Review current policies, measures, and improvements of environmental technologies with special respect to the environmental problems of the research site.

Fundamental Subject: Introduction to Cycle-oriented Environmental Studies, Introduction to Environmental Symbiotic Studies, Introduction to English Ethics, Field and Laboratory Works on Environmental Sciences, Seminar in Environmental Sciences, Advanced Seminar in Environmental Sciences, Special Research in Environmental Sciences, Internship Study in Environmental Sciences I-II, Medium Practicum Study in Environmental Sciences I-II, Long Practicum Study in Environmental Sciences, Special Topics in Environmental Science I-IV

Specialized Subject : Introduction to English Presentation and Debate, Introduction to Environmental Policy, Cultural Ecology, Introduction to International Health, Special Lecture on Environmental Diplomatic Leader I-IV, Introduction to Water Environment, Integrated Water Science and Technology, Utilization and Recycling of Bio-resources, Policy and Planning for Forest Conservation, Biodiversity, Environmental Health Perspective, Introduction to International Law, Introduction to Sustainability Studies, Introduction to Environmental Governance, Environmental Policy Appraisal

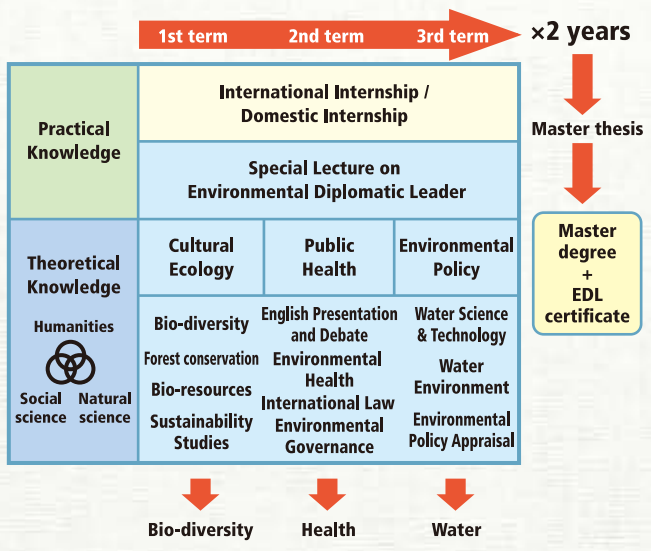
Curriculum of Doctor's Program (Sustainable Environmental Studies) (3 years) Number of acceptance: 6 students per one grade

Doctoral Dissertation: Problem inspecting, suggestion and policy making based on the integration of scientific technology and local knowledge on geography, culture, and ethnicity of the research site.

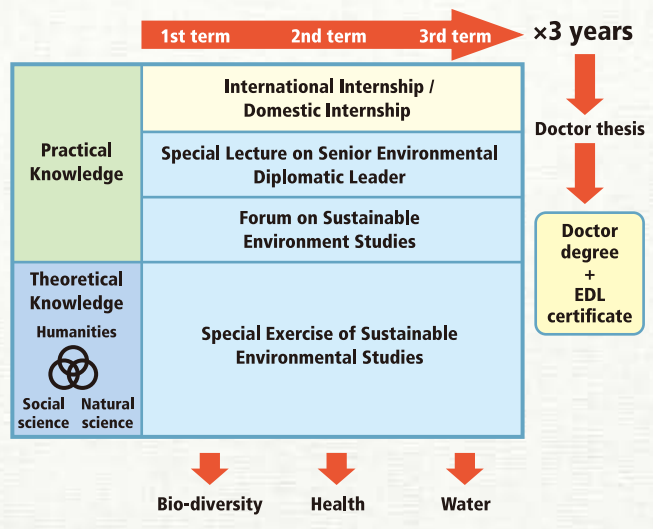
Fundamental Subject: Special Exercise of Sustainable Environmental Studies I-III, Forum on Sustainable Environmental Studies I-III, Internship Study in Environmental Studies, Medium Practicum Study in Environmental Studies,

Specialized Subject: Special Lecture on Senior Environmental Diplomatic Leader I-IV

A model study plan in Master's Program (2 years)



A model study plan in Doctor's Program (3 years)



Featuring activities

Internship

Seeing is believing! For students who are concerned with environmental problems, having the opportunity to visit areas of concern and experience what is happening on the ground is an ideal way to go beyond the textbook. Based on this concept, the EDL Program requires students to actively participate in the internship program. Tunisian and Mongolian internships are offered as an international field trip program and Minamata internship is offered as a domestic program.



■ Tunisia internship



■ Mongolia internship



■ Minamata internship



EDL Special Lectures

Every month EDL Special Lectures offer students the opportunity to meet and talk with preeminent researchers and policymakers, to deepen their understanding of current environmental issues. Previously, lecturers have been invited to give presentations on numerous topics, including global warming, water treatment techniques using membranes, the health impact of methyl mercury, and population problems. This program helps students to understand the complexity and interdependency of environmental problems.

Furthermore, the EDL program organizes a participatory class of Project Cycle Management (PCM). PCM is a method for planning for local environmental problems through active dialogue between stakeholders. In this trial class, EDL students will assume the roles of stakeholders and discuss practical problems that are likely to occur in reality, such as the coordination of stakeholders with differing opinions or planning under constraints of budget and time.



■ EDL Special Lecture



■ Discussion at EDL Special Lecture



■ Class of Project Cycle Management

Symposium

The EDL program seeks to enhance students' English presentation and discussion skills via domestic and international symposium. This is particularly true of the international symposium, which is part of an international internship program, where discussions are held between students and researchers from host institutions.



■ Poster session at international symposium

EDL Cafe

Helping students to build personal connections is a further aim of the EDL program; these connections will be basis of many international academic collaborations and business networks in years to come. To encourage such relationships, EDL students meet at the EDL Cafe once a month, an opportunity for students and professors to talk face-to-face, while enjoying a drink in a comfortable environment.



■ EDL cafe

Public relations

EDL activities are widely publicized using various media channels, such as newsletters (quarterly publication) and the internet. As well, some lectures within this program are released through an E-learning system.

WEB SITE



<http://edl.envr.tsukuba.ac.jp/eng/>

Newsletter



EDL Online Lecture Supported by E-Learning System



Professors



Nobuhiro YAMADA
President of University of Tsukuba



Kuniaki MIYAMOTO Professor
【Affiliation】Graduate School of Life and Environmental Sciences (Chair)
【Specialized field】Watershed Disaster Prevention / Management



Maki TSUJIMURA Associate Professor
【Affiliation】Graduate School of Life and Environmental Sciences
【Specialized field】Water Cycle, Water Resources



Naomi WAKASUGI Professor
【Affiliation】Graduate School of Life and Environmental Sciences
【Specialized field】Infectious Diseases, International Health, Environment & Human health (Professor of EDL)



Takahiro ENDO Associate Professor
【Affiliation】Graduate School of Life and Environmental Sciences
【Specialized field】Political Science (Associate Professor of EDL)



Sun Xiaogang Assistant Professor
【Affiliation】Graduate School of Life and Environmental Sciences
【Specialized field】Anthropology / African Studies (Assistant Professor of EDL)

Norio SUGIURA Professor
【Affiliation】Graduate School of Life and Environmental Sciences
【Specialized field】Water Resources

Zhang Zhen Ya Professor
【Affiliation】Graduate School of Life and Environmental Sciences
【Specialized field】Water Resources, Water Quality Clarification

Yoshiro HIGANO Professor
【Affiliation】Graduate School of Life and Environmental Sciences
【Specialized field】Environmental Policies

Takehiko FUKUSHIMA Professor
【Affiliation】Graduate School of Life and Environmental Sciences
【Specialized field】Water Resources, Water Quality Formation

Misa MASUDA Professor
【Affiliation】Graduate School of Life and Environmental Sciences
【Specialized field】Environmental Policies, International Cooperation, International Negotiation

Kazuo N. WATANABE Professor
【Affiliation】Graduate School of Life and Environmental Sciences
International Student Center (Chair)
【Specialized field】Biodiversity/Bio-Resources

Makoto WATANABE Professor
【Affiliation】Graduate School of Life and Environmental Sciences
【Specialized field】Biodiversity/Bio-Resources

Hiroo UCHIYAMA Professor
【Affiliation】Graduate School of Life and Environmental Sciences
【Specialized field】Biodiversity/Bio-Resources

Nobihiko NOMURA Associate Professor
【Affiliation】Graduate School of Life and Environmental Sciences
【Specialized field】Applied Microbiology

Takeshi KIMURA Associate Professor
【Affiliation】Graduate School of Humanities and Social Sciences
【Specialized field】International Relations, Sustainability

Dadabaev Timur Associate Professor
【Affiliation】Graduate School of Humanities and Social Sciences
【Specialized field】International Water Rights, War Over Water

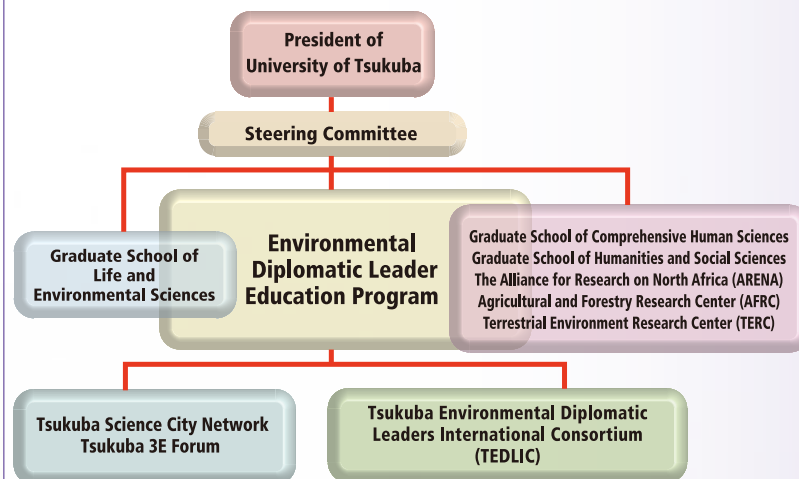
Kenichi MATSUI Assistant Professor
【Affiliation】Graduate School of Life and Environmental Sciences
【Specialized field】Environmental Ethics, International Environment, Comparative Environment

Yoshito KUMAGAI Professor
【Affiliation】Comprehensive Human Sciences
【Specialized field】Environmental Public Health

Hiroko ISODA Professor
【Affiliation】Graduate School of Life and Environmental Sciences, The Alliance for Research on North Africa, University of Tsukuba
【Specialized field】Biodiversity

Isao INOUE Professor
【Affiliation】Graduate School of Life and Environmental Sciences, Advisor to the president
【Specialized field】Microalgae analysis and classification

Organization Chart



Access

Tsukuba Express Line

Akihabara Sta. → Tsukuba Sta. → Tsukuba Center

Rapid Train 45 min. 10 min.

Loop-line On-campus Bus

Train + Bus

Joban Line (Limited Express) 43 min. 30 min. by bus bound for Tsukuba Daigaku Chuo

Ueno Sta. → Tsuchiura Sta.

Joban Line (Normal) 60 min. 40 min. by bus bound for Tsukuba Daigaku Chuo

Hitachino-Ushiku Sta.

Highway bus

80 min. by bus bound for the University of Tsukuba (from Yaesu South Ticket Gate)

Tokyo Sta.

Haneda Airport (HND) 120 min. by bus bound for "Tsukuba Center"

Narita Airport (NRT) 100 min. by bus bound for "Tsukuba Center" 10 min.

University of Tsukuba
EDL Office
(Dai-San Area Mae)



EDL Office
Sustainable Environmental Studies
Graduate School of Life and Environmental Sciences
University of Tsukuba

1.1.1 Tennodai, Tsukuba, Ibaraki, Japan, Post code 305-8572
 T E L : +81-29-853-4958
 E-mail: edlep@envr.tsukuba.ac.jp
 U R L : <http://edl.envr.tsukuba.ac.jp/eng/>